

ZNR ZNS NVR USB-RS232-RS485 Setup

Here is an example of the “USB to RS-232 cable” and the “RS-232 to RS-484/422 converter” which are what the ZNR hybrid Video Servers needs to control the analog PTZ cameras. Only one set is needed to control many PTZ cameras.



Figure 1. (RS-232 to RS-484/422 converter) and (USB to RS-232 cable)

After you plug the USB-RS232-RS485 Cable to the ZNR, you will next need to install the drivers, from the included mini CD, to use the USB to RS232 cable. Usually Serial Port “COM3” is created for this cable..

Which ever USB port the cable is connected to is the only one that the driver is now assigned to.

So it may be best to identify that USB port on the server. Otherwise you will be asked to re-install the drivers again.

When setting up the PTZ Camera on the ZNS-NVR software, note that there are only six protocols available, for now, as shown on the right:

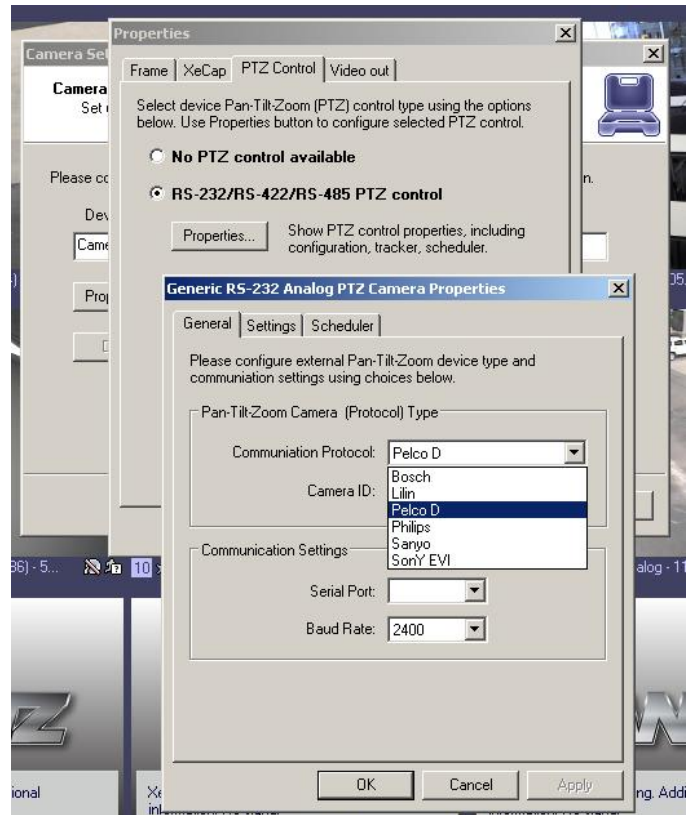


Figure 2. (PTZ Protocols)